

# PACIFIC PARK PLAZA

OFFICE, RETAIL,  
& INDUSTRIAL  
UNITS  
AVAILABLE

*Pacific Park Plaza*

**27101 - 27141 ALISO CREEK RD  
ALISO VIEJO, CA 92656**

**ESSEX** | REALTY  
MANAGEMENT, INC.

For More Information Contact:

*Angela Draper*

*Marketing/Leasing Associate*

*ADraper@essexrealty.com*

*ph: 949.798.8100*

*www.essexrealty.com*

*License #01972882*

# PACIFIC PARK PLAZA

## AVAILABILITIES:

### Office:

27141- 270: 2,409sf (6 private offices, wetbar, conference room)

27141- 235: 898sf (4 private offices and reception)

### Retail:

27131-155: 1,696sf (Open retail space w/ roll up door in back)

27131-150: 1,766sf (Former restaurant space)

27131-100: 1,350sf (Offices/storage)

27131-110: 775sf (Retail space w/ office and conference room)

### Features:

- Beautiful park-like setting
- Easy access to 73 Toll Road
- Walking distance to shops, restaurants, and other amenities.
- Onsite management/leasing office

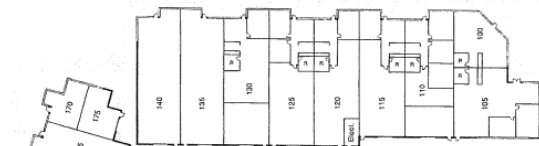
# PACIFIC PARK PLAZA



**27101 Aliso Creek Road**



**27111 Aliso Creek Road**



**27121 Aliso Creek Road**

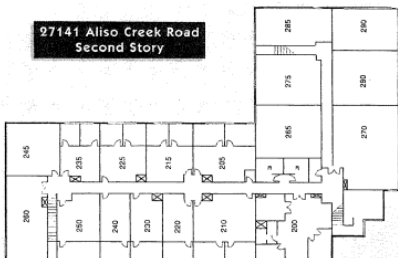


**27131 Aliso Creek Road**



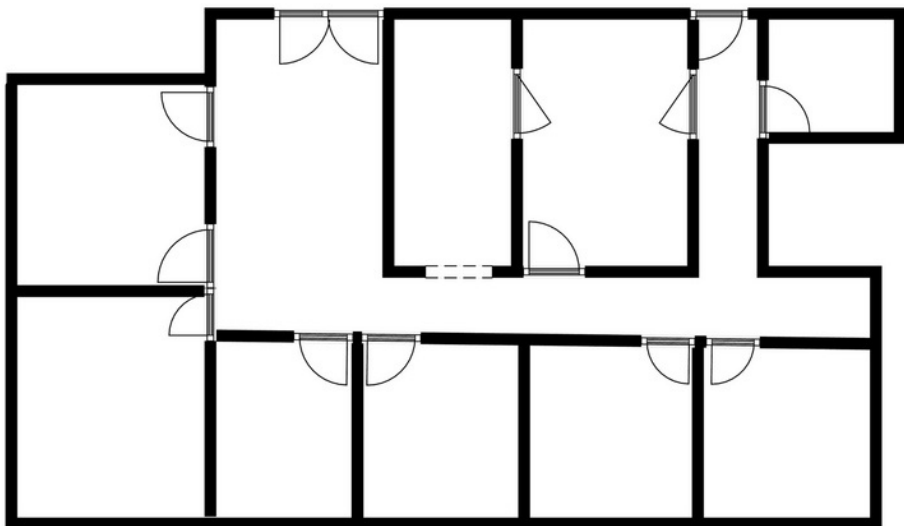
**27141 Aliso Creek Road**

**27141 Aliso Creek Road  
Second Story**



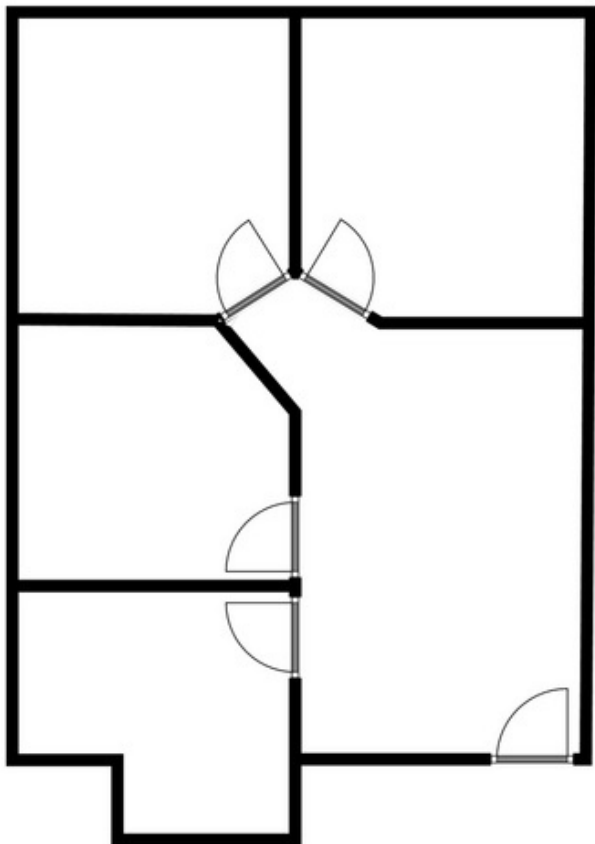
# PACIFIC PARK PLAZA

27141-270  
2,409 Sq. Ft.



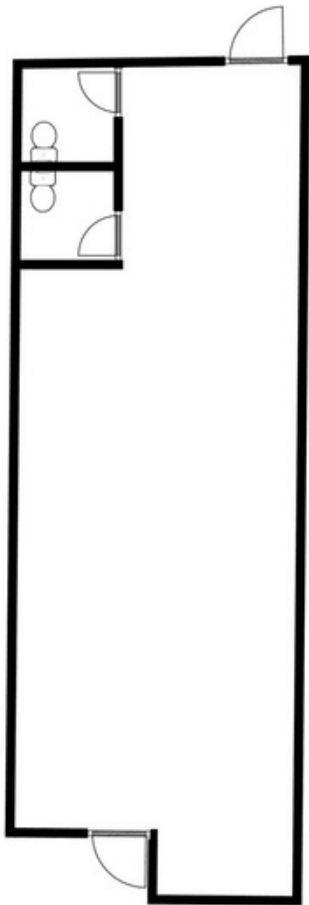
# PACIFIC PARK PLAZA

27141-235  
898 Sq. Ft.



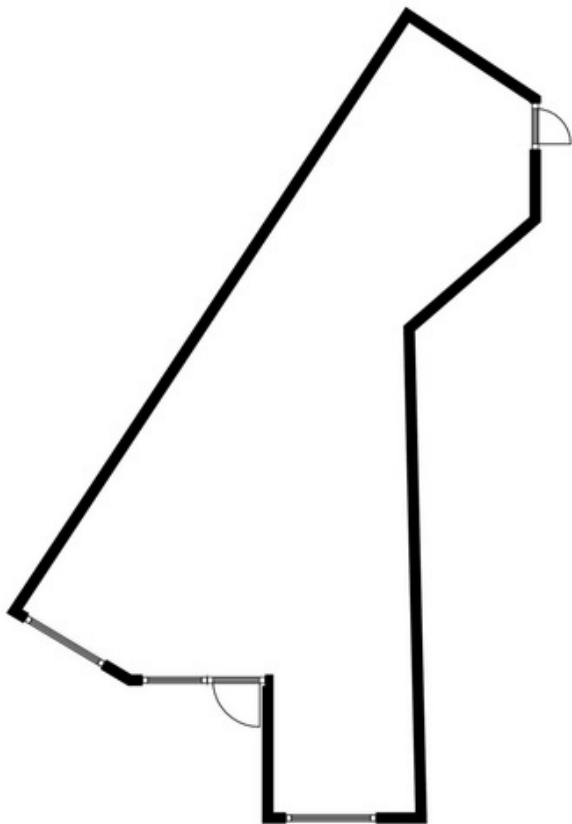
# PACIFIC PARK PLAZA

27131-155  
1,696 Sq. Ft.



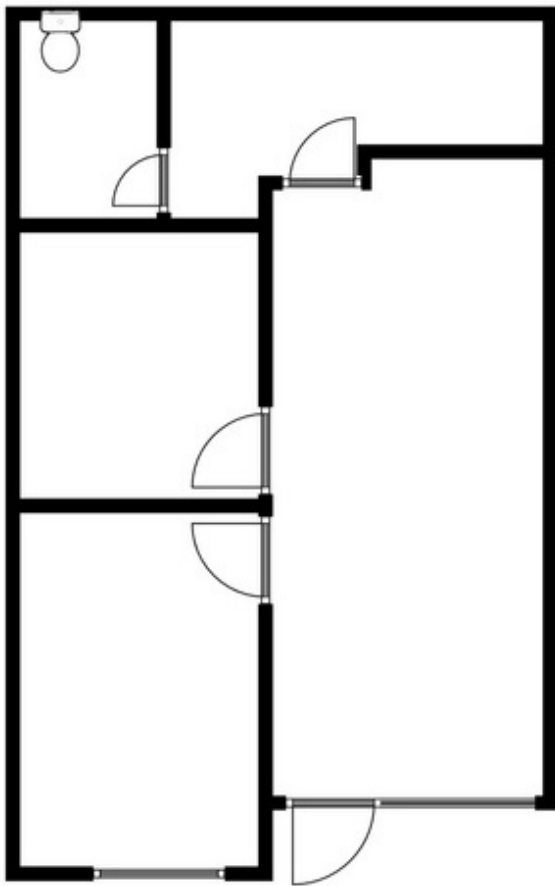
# PACIFIC PARK PLAZA

27131-150  
1,766 Sq. Ft.



# PACIFIC PARK PLAZA

27131-110  
775 Sq. Ft.





# PACIFIC PARK PLAZA

27131-100  
1,350 Sq. Ft.

