

# CIVIC CENTER PLAZA

## **OFFICE SPACE FOR LEASE**

868 SF – 1,189 SF of Office Space Available



**30011 IVY GLENN, LAGUNA NIGUEL**

**Angela Draper**  
**Marketing/Leasing Associate**  
949.798.8100  
adraper@essexrealty.com  
Lic. 01972882

**ESSEX** || REALTY  
MANAGEMENT, INC.

[www.EssexRealty.com](http://www.EssexRealty.com)

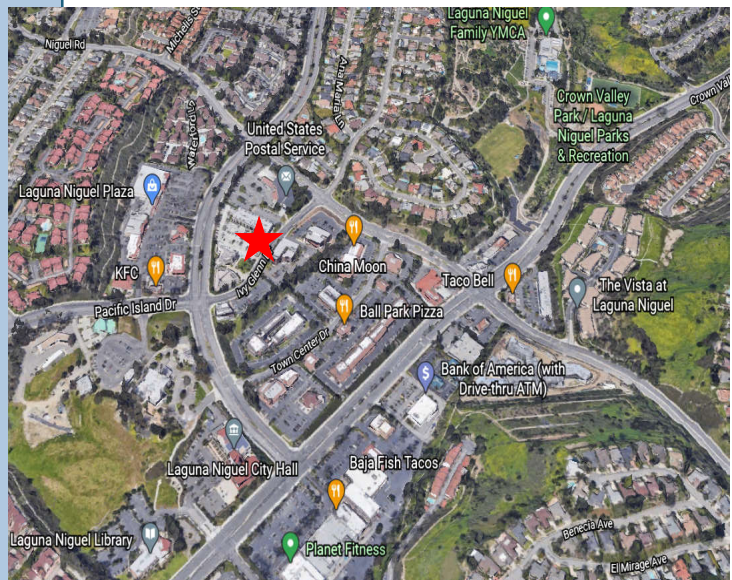


## Features:

- Office suites from 500 sf to 1200 sf
- Common areas have been newly renovated
- Office Building is professionally managed
- Suites contain new paint and carpet and are move in ready.
- Adjacent to the Laguna Niguel Post Office
- Centrally Located in Laguna Niguel
- 4 miles from the 73 Tollroad at La Paz Road entrance.
- Adjacent to the Laguna Niguel Post Office
- Close to shopping, restaurants, public transportation, and Dana Point Harbor.
- Within walking distance to Starbucks, 3 cleaners, 2 grocery stores eateries.

## Availabilities:

Suite	Size
102	1,189 SF
115	1,189 SF
125	868 SF
219	1,173 SF
220	1,074 SF



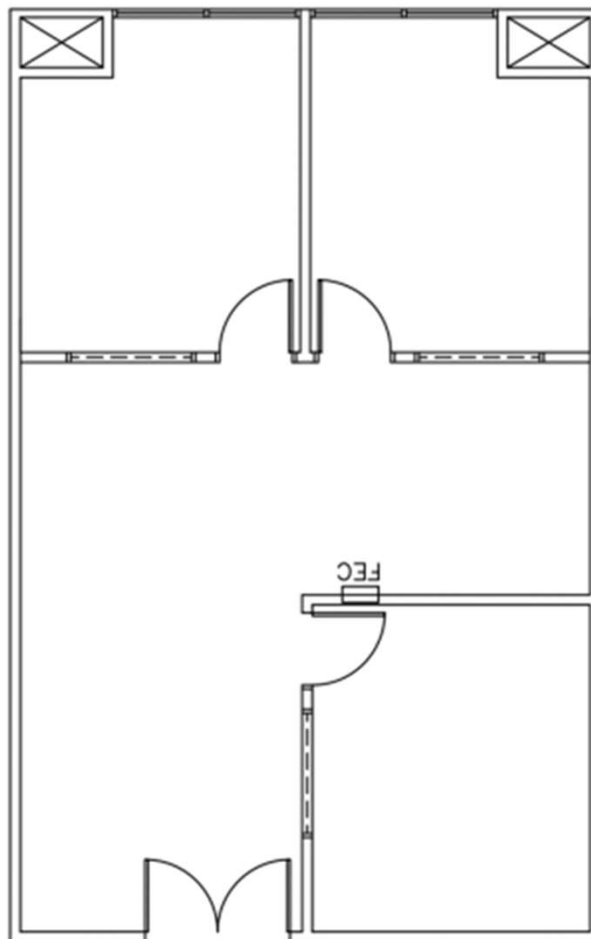
**Angela Draper**  
**Marketing/Leasing Associate**  
 949.798.8100  
 adraper@essexrealty.com  
 Lic. 01972882

**ESSEX** REALTY  
 MANAGEMENT, INC.  
[www.EssexRealty.com](http://www.EssexRealty.com)

# CIVIC CENTER PLAZA

## Suite 102

1,189 SF



**30011 IVY GLENN, LAGUNA NIGUEL**

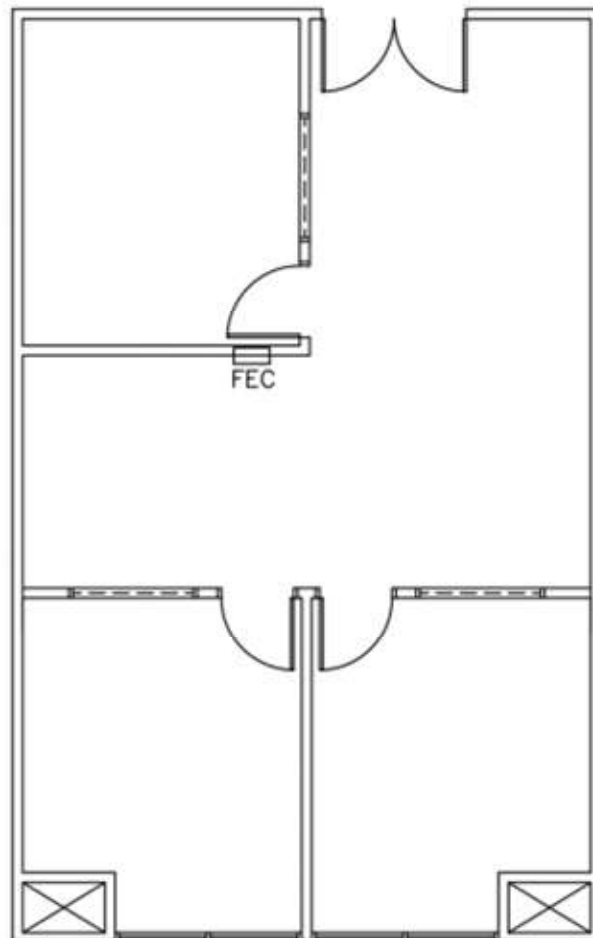
Angela Draper  
Marketing/Leasing Associate  
949.798.8100  
adraper@essexrealty.com  
Lic. 01972882

ESSEX || REALTY  
MANAGEMENT, INC.  
[www.EssexRealty.com](http://www.EssexRealty.com)

# CIVIC CENTER PLAZA

## Suite 115

1,189 SF



**30011 IVY GLENN, LAGUNA NIGUEL**

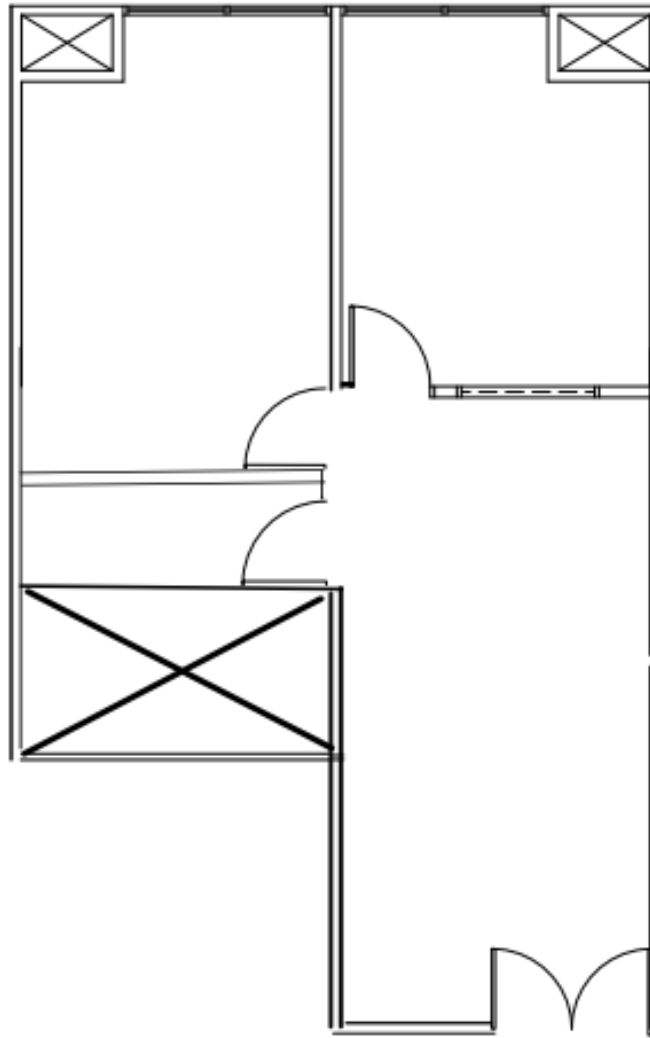
Angela Draper  
Marketing/Leasing Associate  
949.798.8100  
adraper@essexrealty.com  
Lic. 01972882

ESSEX || REALTY  
MANAGEMENT, INC.  
[www.EssexRealty.com](http://www.EssexRealty.com)

# CIVIC CENTER PLAZA

## Suite 125

868 SF



**30011 IVY GLENN, LAGUNA NIGUEL**

Angela Draper  
Marketing/Leasing Associate  
949.798.8100  
adraper@essexrealty.com  
Lic. 01972882

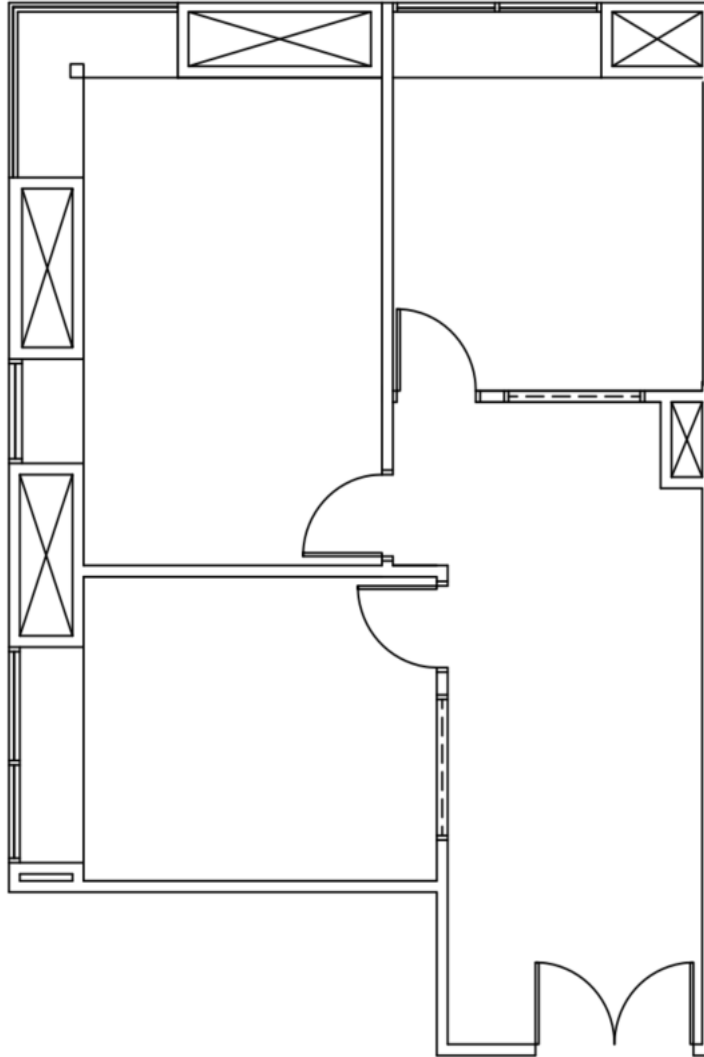
ESSEX || REALTY  
MANAGEMENT, INC.

[www.EssexRealty.com](http://www.EssexRealty.com)

# CIVIC CENTER PLAZA

## Suite 219

1,173 SF



**30011 IVY GLENN, LAGUNA NIGUEL**

Angela Draper  
Marketing/Leasing Associate  
949.798.8100  
adraper@essexrealty.com  
Lic. 01972882

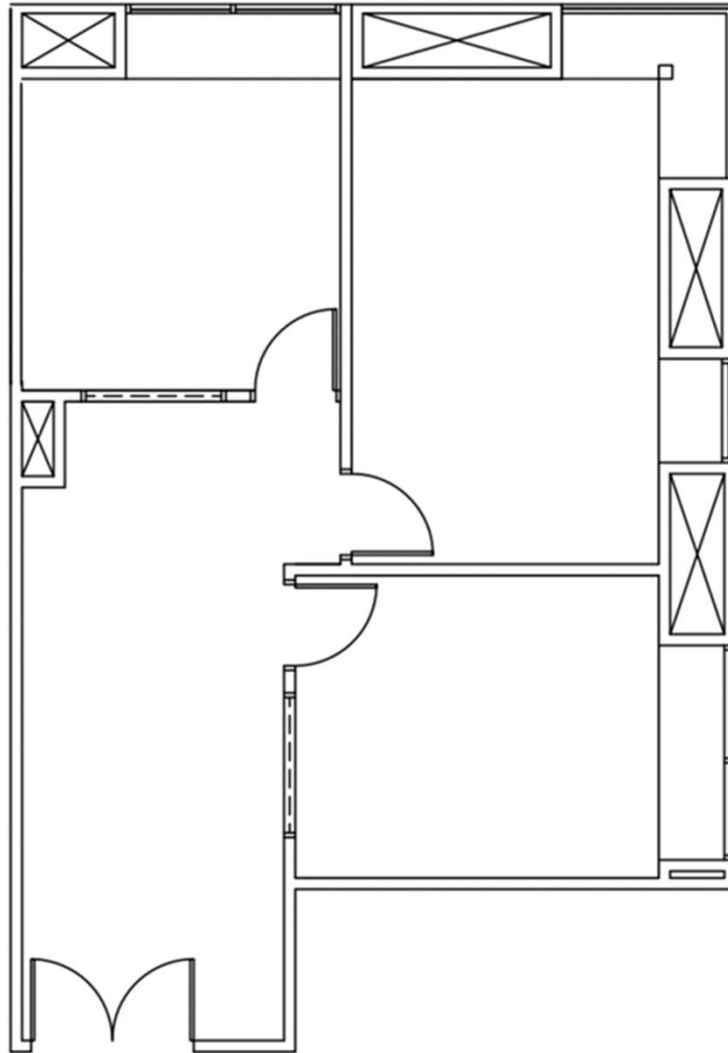
ESSEX || REALTY  
MANAGEMENT, INC.

[www.EssexRealty.com](http://www.EssexRealty.com)

# CIVIC CENTER PLAZA

## Suite 220

1,074 SF



**30011 IVY GLENN, LAGUNA NIGUEL**

Angela Draper  
Marketing/Leasing Associate  
949.798.8100  
adraper@essexrealty.com  
Lic. 01972882

ESSEX || REALTY  
MANAGEMENT, INC.  
[www.EssexRealty.com](http://www.EssexRealty.com)